

Product datasheet

Rabbit Anti S1 Tag Antibody, pAb

Cat: NA0063

Name: Rabbit Anti S1 Tag Antibody, pAb

Immunogen: S1 tag peptide(NANNPDWDF) conjugated to keyhole limpet haemocyanin(KLH)

Host Species: Rabbit

Specificity: This antibody recognizes C-terminal and N-termina region of S1 Tag fusion proteins.

Form: Liquid

Concentration: 0.5 mg/ml

Storage Buffer: 1×PBS, pH7.4, containing 50% glycerol and 0.03% Proclin 300.

Purification: Antigen affinity purification

Clonality: Polyclonal

Isotype: Rabbit IgG

Shipping and Storage: Shipped in ice bag. The antibody can be stored for 1-2 weeks at 2-8°C. For long term storage, store it at -20°C. Avoid repeated freezing and thawing cycles.

Expiration Date: Specified on product label.

Applications

Application	Recommended Usage
ELISA	0.05-0.5µg/ml
Western Blot	0.1-1µg/ml
Other applications	User-optimized

Note: Ningyang Biotech can offer this product according to your requirement, including product size, buffer components, etc.

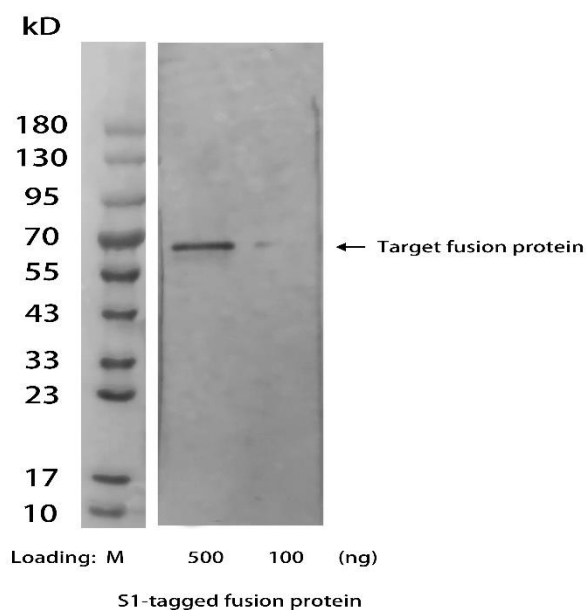


Figure 1. Detection of S1 tag in recombinant fusion protein were analyzed by Western blot using Rabbit Anti S1 Tag Antibody, pAb (NingyangBiotech,Cat.NA0063, at 1 μ g/mL concentration).

The signal was developed with Goat Anti-Rabbit IgG(H&L)[HRP], pAb(NingyangBiotech Cat.NA0030).

For research use only. Not intended for human and animal therapeutic or diagnostic use.