

## Product datasheet

## Rabbit Anti PEG Antibody, mAb

Cat: NA0173

Name: Rabbit Anti PEG Antibody, mAb

Immunogen: Polyethylene glycol conjugated to keyhole limpet haemocyanin(KLH)

Host Species: Rabbit

Specificity: This antibody recognizes PEG40K,PEG20K,PEG5K,PEG12 and PEG conjugates.

Form: Liquid

Concentration: 0.5 mg/ml

Storage Buffer: 1×PBS, pH7.4, containing 0.1% BSA, 50% glycerol and 0.03% Proclin 300.

Purification: Purified by Protein A

Clonality: Monoclonal

Isotype: Rabbit IgG

Clone ID: 13D4

Shipping and Storage: Shipped in ice bag. The antibody can be stored for 1-2 weeks at 2-8°C. For long term storage, store it at -20°C. Avoid repeated freezing and thawing cycles.

Expiration Date: Specified on product label.

**Note:** Some reagents with structures similar to PEG, such as Tween-20, Triton X-100, and NP-40 can affect the detection of PEG antibody. The detection system cannot contain such reagents.

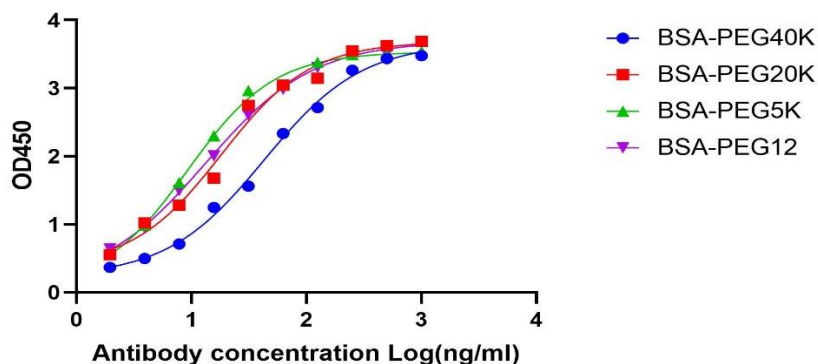
## Applications

Application	Recommended Usage
ELISA	0.1-1 µg/ml
Western Blot	0.1-1µg/ml
Other applications	User-optimized

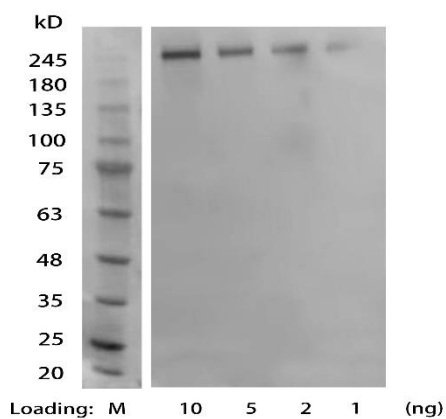
Note: Ningyang Biotech can offer this product according to your requirement, including product size, buffer components, etc.

## Examples

### Indirect ELISA analysis of variety of PEG

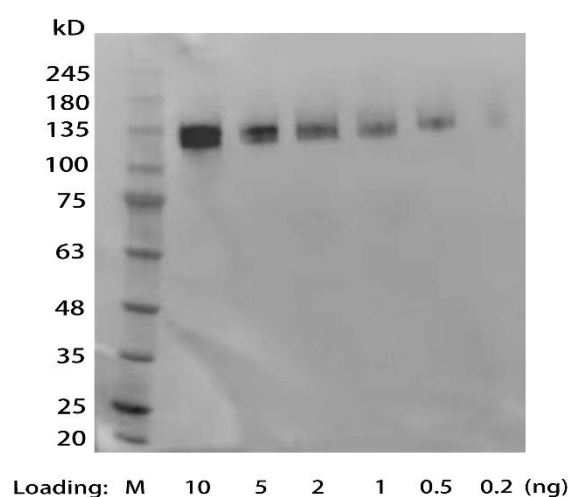


**Figure 1.** The test results show that the PEG Antibody could detect PEG with different molecular weights. Secondary antibody used at 1/30000.HRP conjugated Goat Anti-Rabbit IgG (NingyangBiotech Cat.NA0030).



**Figure 2.** Detection of PEGylated antibody by Western blot using Rabbit Anti PEG Antibody, mAb (NingyangBiotech,Cat.NA0173, at 0.2  $\mu$ g/mL concentration).

The signal was developed with Goat Anti- Rabbit IgG(H&L)[HRP], pAb(NingyangBiotech Cat.NA0030).



**Figure 3.** Detection of PEGylated protein by Western blot using Rabbit Anti PEG Antibody, mAb (NingyangBiotech, Cat.NA0173, at 0.2  $\mu\text{g/mL}$  concentration).

The signal was developed with Goat Anti- Rabbit IgG(H&L)[HRP], pAb(NingyangBiotech Cat.NA0030).

**For research use only. Not intended for human and animal therapeutic or diagnostic use.**